

External Sinus Lift



An Intensive 2 day Course

26/27 March 2012

Venue Bath,UK

Advanced course



External Sinus Lift

Learning objectives:

- Understand Biologic principles of sinus grafts
- To examine the reasons why sinus grafts are indicated
- Review the literature and provide evidence of graft and implant success rates
- To look at a variety of surgical sinus graft techniques and surgical instrumentation
- Practice Hands-On procedures using models and fresh animal samples

Lecture Topics:

Day 1

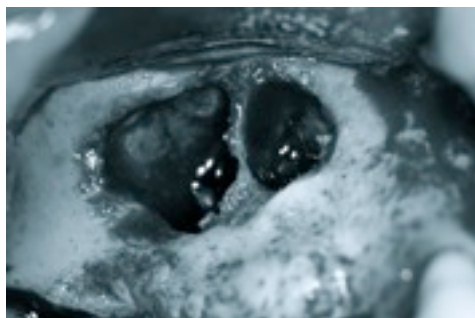
- Introduction: when things go wrong
- Why are we performing a sinus graft? (indications and contra-indications)
- Evidence of sinus graft efficacy
- Evidence of implant success rate in grafted bone
- Historical development
- Radiographic assessment in two and three dimensions and interpreting the radiographs to assess surgical risk. Common radiographic anomalies

Procedures (1)

- Review of sinus graft elevators
- Micro-surgical Instrumentation:
Blades, holders, elevators, Suturing
- Magnification

Hands on (1)

- Window preparation using a bur
- Window preparation using a piezon



External Sinus Lift

Day 2

Video with step by step instructions on how to perform a sinus graft procedure

Hands on (2)

- Use of Biooss, Biogide, Fortoss, Bone ceramic
- Sinus elevation on pig maxilla

Lectures:

- Flap design and suturing
- Anatomical landmarks
- Anatomical variations
- Patient preparation; what to warn patient of post-operatively
- Immediate and delayed complications and how to manage them
- Simultaneous vs. staged implant placement



External Sinus Lift



Speakers

Chong Lim
BDS MSC
Specialist Periodontist (UK)

Jonathon Schofield
BDS DPDS MFGDP

Educational Benefits

- 14 hours of verifiable CPD in implant dentistry
- Gala dinner
- Dine and learn with your tutors on the evening of 19th November
- Lecture handouts
- Step by step instructional flash-drive
- On-line support for one year



External Sinus Lift

Venue

The Dental Implant Clinic
24 Newbridge Road
Bath, BA1 3JZ

Course Fee

£1000 plus VAT

Payment terms:

Payment: £500 deposit. This deposit is not refundable if your place is cancelled within 28 days of the start of the course.

How to pay:

By credit card: Please ring ++44 (0)1225 448400

By Cheque: Cheques made payable to, 'Jonathon Schofield Postgraduate Training Ltd.'

Our Sponsors:

Geistlich
Biomaterials

Evident 
...it's all about quality



generalmedical

